

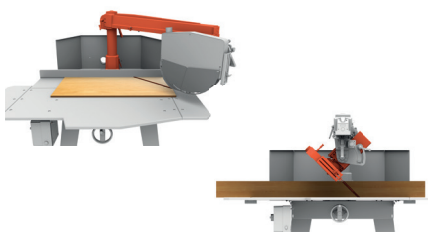
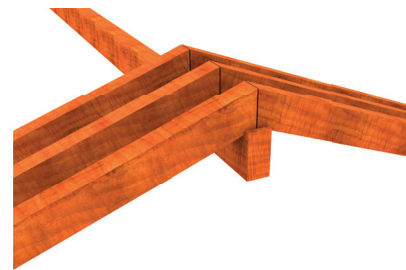


Manual,  
radial-arm,  
crosscut saw



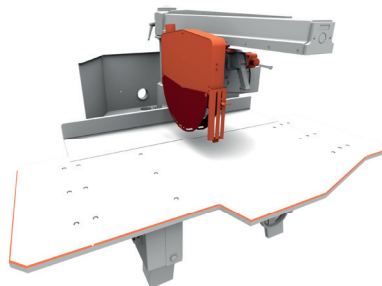
## BEST 1250 S

For straight (90°), miter (0° to 45°- left) cross cutting and bevel cutting at 45° left and right, of wooden-based panels and solid wood boards up to 3mt. For furniture manufacturing and joinery.



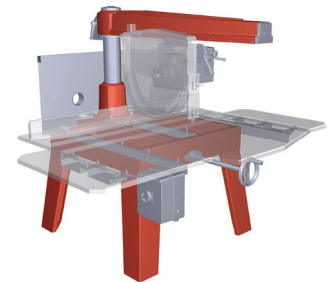
### VERSATILE

Swivelling arm up to 45° left and right and left tilting cutting-head (0° to 45° with stop and lock at any intermediate angle) allow many different cutting operations for the greatest versatility.



### SAFE

Sound-insulated, full-cover blade guard with safety microswitch, anti-kickback, well-dimensioned working bench and emergency button definitively contribute to the operator safety during the cutting process.



### SOLID AND ACCURATE

Rugged steel construction, arm and base made of cast iron. Interchangeable and tempered-steel made guides. Cutting head sliding on 8 ball bearings for a smooth, precise and effortless carriage movement.

- **Small footprint** : well suited to small workshops
- **Easy to use**
- **Versatile**
- **Useful complement** to panel saws



## BEST 1250 S SERVICE

Worldwide after-sale service.  
Real-time, on-line remote assistance through a dedicated augmented reality APP.  
Spare-parts availability for up to 10 years, shipment within 24 hrs

## DATA SHEET

Max. cutting height:	200 mm
Max. cutting width	1140 x 20 h mm
Min..cutting width	970 x 200 h mm
Max.length of workpiece	unlimited
Max. cutting width for ripping	not allowed
Cutting height at 45°	0 - 135 mm
Min. and Max. cutting width at 45° (right)	675- 785 mm
Min. and Max. cutting width at 45° (left)	385- 595 mm
Height of blade from working bench	0 - 40 mm
Blade diameter	565 mm
Blade bore diameter	30 mm
Motor	HP / KW 7,5/5,5 RPM 2800
Working bench dimensions	2400x1580mm
Diameter of dust collection nozzle on blade guard	60 mm
Diameter of dust collection nozzle on rear hood	100 mm
Overall dimensions of full- assembled machine	2400x2020x1579mm
Package dimensions and weight	2400x1100x1600mm - 326Kg



### TOP OF THE RANGE

**7,5 HP Motor and max. cutting height up to 200 mm** make this machine ideal for carrying out heavy-duty working process, like cutting of beams and/or different types of building structures. Very quick set-up thanks to the front lifting handle for the cutting-height adjustment. **Max. cutting width up to 1.140 mm**

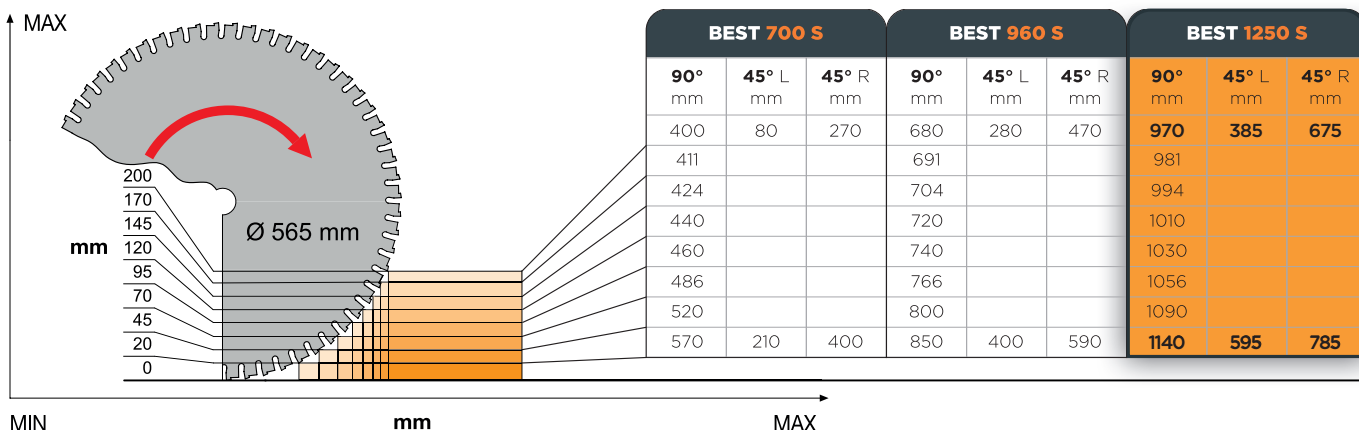
### CUTTING HEIGHT

### CUTTING

45°  
SX



### WIDTH



### SERVICE

+39 0571 635 433

service@maggi-technology.com

### MAGGI TECHNOLOGY

Via delle Regioni, 299  
50052 Certaldo (Firenze) Italia

### SALES

+39 0571 635 474

sales@maggi-technology.com



MADE  
in ITALY